

2011-2012 Programs and Services



“The beautiful thing about learning is that no one can take it away from you.”

B.B. King



CREC

Capitol Region Education Council

www.crec.org

Welcome from the Executive Director

We present this catalog to provide a responsive, comprehensive resource, outlining CREC's many programs and services. We hope you will discover solutions to meet your training, operational and administrative needs. It is our goal to save you time and money, while providing the most effective and innovative solutions to challenges that arise in your district, town or organization.

The Capitol Region Education Council (CREC) has been working for its member school districts in the Capitol Region since 1966. From its inception, the primary goal of the organization has been to assist, support and offer value to districts, municipalities, agencies and organizations throughout Greater Hartford. Our guiding principle is simple: Every student, from early childhood through adulthood, can and shall learn at high levels and, therefore, must have access to all education resources within the region, through the system of public schools served by CREC.

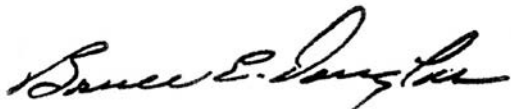
CREC is committed to staying on the cutting edge to ensure that our clients have access to the best possible knowledge, skills and practices to achieve their goals. CREC offers high quality, cost-effective professional development, programs, and services, designed to meet the unique needs of each client. We understand the tenuous balance between the reality of limited resources and the need for continuous professional growth and development. Recognizing the value of regional approaches and resource coordination, we identify and utilize cost saving opportunities to assist schools, municipalities and other nonprofit organizations interested in sharing resources to achieve common goals.

CREC offers creative solutions that meet the needs of education professionals, business managers in cities and towns and executives in non-profit organizations. We have expertise serving learners and their families across the continuum, from early childhood through adulthood. We strive to provide the best possible educational opportunities and support services – our children and families deserve nothing less.

For a more detailed inventory of offerings, or to obtain additional information about CREC, please visit our website at www.crec.org.

We look forward to working with you in the coming year.

Sincerely,

A handwritten signature in black ink, appearing to read "Bruce E. Douglas". The signature is fluid and cursive, written in a professional style.

Bruce E. Douglas, Ph.D.

Executive Director

CREC Mission and Vision

Our Vision

Every student can and shall learn at high levels and therefore must have access to all educational resources of the region through the system of public schools served by CREC.

Our Mission

To work with boards of education of the Capital Region to improve the quality of public education for all learners.

In order to achieve its mission, CREC will:

- Promote cooperation and collaboration with local school districts and other organizations committed to the improved quality of public education
- Provide cost-effective services to member districts and clients
- Listen and respond to client needs for the improved quality of public education
- Provide leadership in the region through the quality of its services and its ability to identify and share quality services of its member districts and other organizations committed to public education

Table of Contents

Early Childhood Education

Classroom Rituals and Routines	1
Cycle of Intentional Teaching.....	1
Early Childhood Scientific Research-Based Interventions (SRBI)	1
Early Childhood SRBI Audit	1
Interactive Read Alouds in Preschool and Kindergarten.....	1
K-2 Literacy Support.....	1
Montessori Teacher Training.....	2
Phonological Awareness	2
Positive Behavioral Interventions and Supports (PBIS) in Early Childhood Settings	2
Preschool Assessment Framework (PAF) Walkthroughs.....	2

K-12 Education

Office of School Transformation.....	3
--------------------------------------	---

Hartford Region Open Choice Program.....	3
--	---

Curriculum, Instruction and Assessment

Curriculum

Common Core State Standards Mathematics Curriculum Development	3
Common Core State Standards Language Arts Curriculum Development.....	3
Curriculum Unit Revision Infusing Technology.....	3
Online and Blended Course Design	3
Science Curriculum Development.....	4
Virtual High School Virtual Learning Academy	4
21st Century Skills	4

Instruction

Data-Driven Decision-Making and Data Team Facilitation	4
Differentiated Instruction.....	4
Effective Teaching Strategies	4
Effective Teaching Strategies for English Language Learners	5
Instructional Coaching	5
Lesson Studies and Demonstrations.....	5
Looking at Student Work.....	5
Paraprofessional Professional Development.....	5
Readers and Writers Workshop.....	6
Teaching Financial Literacy.....	6

Assessment

Assessment Data Collection	6
Curriculum and Assessment Consortium	6
K-2 Assessment Consortium	6

Secondary Education

Connecticut's Career Pathways Initiative.....	6
Connecticut Student Success Plans (SSP)	6
Secondary Special Education Issues	7
Youth @ Work – Talking Safety	7

Connecticut Accountability for Learning Initiative (CALI)..... 7

Scientific Research-Based Interventions (SRBI)

SRBI: Overview and Implementation Support	7
SRBI Framework: Developing, Maintaining and Extending Comprehensive Practices.....	7

Instructional Technology

Web 2.0 Design and Support	8
Wiki Space Development and Support	8

Special Education/Student Support Services

Assistive Technology (AT) Services	8
Co-Teaching Practices: Basic and Advanced	8
Individual Education Plans (IEPs) for Educational Benefit.....	8
Specialized Instruction/Child Specific Consultation	9
English Language Learners with Special Needs	9
Meeting the Needs of Students with Autism	9
Serving Adults With Disabilities.....	9
Special Education Audit and Program Assessment Services.....	9

School Climate

Bullying.....	10
Culturally Responsive Teaching.....	10
Improving School Climate to Improve Student Achievement	10
Positive Behavioral Interventions and Supports (PBIS)	10
Welcoming Schools Training	10

District/School Leadership

Data-Driven Decision Making for School Leaders.....	10
Mentoring for Administrators.....	10
Mini Observations.....	11
Professional Development for Aspiring and Practicing Instructional Leaders	11
School Improvement Planning.....	11
Teacher Evaluation and Supervision.....	11

School/Family/Community Partnerships

Family Learning	11
School Governance Councils	11

Adult Education and Employee Development

Adult Education Program Review	12
Annual Conference on Serving Adults with Disabilities	12
English Language Learner (Basic and Intermediate).....	12
English Language Learner (Advanced)	12
General Education Development	12
Human Service Training.....	12
Workforce Development Services	12

Communities of Practice

Regional Councils

Curriculum Council	13
Early Childhood Council	13
Language Arts Council	13
Math Council.....	13
Science Council	13
Technology Council.....	13

Leadership Networks

Scientific Research-Based Interventions - Strand A.....	14
Special Education Student Achievement - Strand B	14

Other Networks and Consortia

Assistive Technology (AT) Consortium	14
PBIS Implementers' Network.....	14
Regional Adult Literacy Partnerships	14

Infrastructure/Organizational Support Services

Business/Accounting Services

Business and Operations Services to Districts	15
Comparative Analysis of Expenditures.....	15
Financial Operating System and Reporting Process Reviews	15
Internal Controls Assessment.....	15

Human Resources/Career Development

CREC Career Academy	15
Advanced Alternate Route to Certification for Special Education Cross Endorsement (AARC).....	15
Leadership Development for Non-Certified Staff	15
Paraprofessional Educator Certificate Program	16
Speech-Language Pathology Assistant (SLPA) Certificate	16
Technology Professional Training and Certification.....	16

Human Resources Services

Analysis of Recruitment and Selection Process	16
Interim Staffing and Evaluation Services.....	16
Minority Teacher Recruitment	17
Review of Diversity and Equal Opportunity	17

Information Technology Services

Classroom Video Production.....	17
Data Management	17
Desktop Computer and Server Support.....	17
Infrastructure Planning and Support	17

Information Technology Services

Software and Application Hosting.....	18
Tablet and Mobile Computing.....	18
Technology Audit.....	18
Technology Budgeting and Fulfillment	18
Technology Policy and Practice Development	18

Operations

Building Operations Services

Outsourcing Custodial and Maintenance Staff	18
---	----

Food Services

Planning and Consultation Services	19
--	----

School Construction, Program Management and Owner's Representation

Facilities and Feasibility Studies	19
Facility/Operations Services.....	19
Project/Program Management Services.....	19

Transportation Management and Consultation

Contractor Management.....	19
Customer Service and Support	19
Regionalization Planning.....	20
Reporting and Analysis	20
Safety Programs and Training.....	20
Staff Brokering.....	20

Other Services

After School Program Quality Advising.....	20
Audit and Program Assessment	20
Conference and Events Management.....	20
Facilitators for Strategic Planning	20
Health and Wellness	20
Meeting Facilitation.....	20
New Business Development	21
Survey Development and Analysis	21

Grants and Development Services

Foundation Development.....	21
Fundraising – Annual Appeals.....	21
Grant Writing and Research.....	21
Regional Resource Collaborative.....	21

CREC Products

COMPASS: Helping Paraprofessionals Navigate the Profession.....	22
Designing IEPs for Educational Benefit: A Training Program	22
Guide for Effective Use and Supervision of Speech and Language Pathology Assistants (SLPA).....	22
Response to Intervention: A Planning and Implementation Guide for School Practitioners.....	22
The Use of Visuals with Individuals with Special Needs....	22

CREC Senior Leadership

Contact Information

Early Childhood Education

Classroom Rituals and Routines

Effective classroom management requires that a teacher address expectations for student learning, routines, transitions, effective use of space and standards for student behavior. We work with you to provide workshops and coaching to meet your center's or school's needs, creating an environment that promotes learning.

Contact: Barbara Perrone
bperrone@crec.org 860-509-3665

Cycle of Intentional Teaching

We offer pre-school training and coaching through on-site, full-day, targeted workshops developed to introduce your staff to the key elements of the Cycle of Intentional Teaching, using the SDE Preschool Curriculum Frameworks (PCF) and the Preschool Assessment Framework (PAF).

Contact: Barbara Perrone
bperrone@crec.org 860-509-3665

Early Childhood Scientific Research-Based Interventions (SRBI)

CREC assists districts and community agencies interested in improving their delivery of services to young children. Working collaboratively, we provide assistance with the Cycle of Intentional Teaching, Recognition and Response, preschool assessment, action plan development and facilitation.

Contact: Tim Nee
tnee@crec.org 860-509-3650

Early Childhood SRBI Audit

CREC's Early Childhood SRBI audit team, comprised of early childhood professionals, will examine preschool and kindergarten programs based on the five domains of evidence: Evidence Based Practices and Protocols, Screening, Assessment and Progress Monitoring, Collaborative Problem Solving and Parent and Family Partnerships.

Contact: Tim Nee
tnee@crec.org 860-509-3650



Interactive Read Alouds in Preschool and Kindergarten

Repeated Interactive Read Alouds are a systematic method which allow teachers to scaffold children's understanding of stories, teach vocabulary and foster oral language development and comprehension. Our experienced staff can provide training and modeling for preschool and kindergarten teachers.

Contact: Barbara Perrone
bperrone@crec.org 860-509-3665

K-2 Literacy Support

We will guide your K-2 teachers in the planning of effective lessons and /or literacy centers that align with standards, research based strategies and differentiated instruction. CREC provides a balanced delivery of professional development support by including research, modeling, and practice.

Contact: Barbara Perrone
bperrone@crec.org 860-509-3665



Montessori Teacher Training

CREC operates and manages the Montessori Training Center of New England. The center is affiliated with the Association Montessori Internationale and provides teacher training, workshops and consultation for those interested or involved in Montessori education.

Contact: Tim Nee
tnee@crec.org 860-509-3650

Phonological Awareness

The seven components of phonological awareness are the precursors to reading success. Our early childhood staff will work with you to customize phonological awareness workshop sessions to meet your needs in Pre-K- Grade 2.

Contact: Barbara Perrone
bperrone@crec.org 860-509-3665

Positive Behavioral Interventions and Supports (PBIS) in Early Childhood Settings

This tiered prevention framework provides a continuum of support and services to foster social competence in young children, while simultaneously limiting challenging behaviors. Services may include training and staff development, classroom intervention strategies and technical assistance.

Contact: Barbara Perrone
bperrone@crec.org 860-509-3665

Preschool Assessment Framework (PAF) Walkthroughs

Using a variation of the traditional walkthrough, we will help you determine the level of state standards implementation and benchmark differentiation in your early childhood classrooms. The PAF walkthrough was developed by CREC in collaboration with the Hartford Office for Young Children.

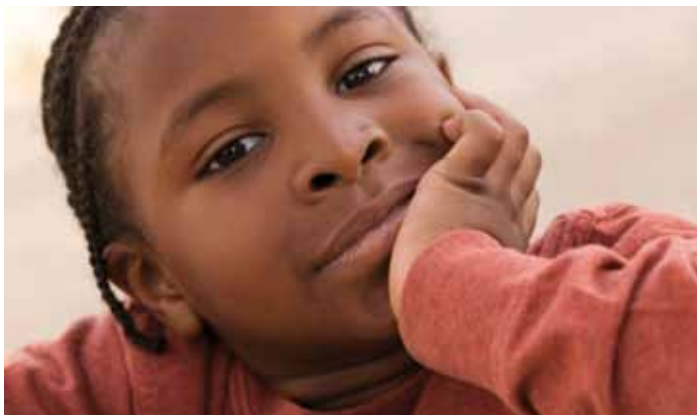
Contact: Tim Nee
tnee@crec.org 860-509-3650

K-12 Education

Office of School Transformation

CREC's Office of School Transformation supports school districts taking bold steps to engage in comprehensive reform efforts. We provide guidance and support at every phase of transformational change: vision, instructional core, human capital and infrastructure. CREC works closely with school districts to build capacity for continuous improvement, monitoring and adjustments while scaling up programs with demonstrated success.

Contact: Dina Crowl
dcrowl@crec.org 860-509-3603



Hartford Region Open Choice Program

CREC manages the Open Choice program, an interdistrict public school program that helps improve academic achievement, reduce racial, ethnic and economic isolation and provides a choice of educational programs for public school students. The program allows urban students to attend public schools in nearby 28 suburban towns and suburban students to attend designated Hartford public schools. Enrollment is offered by school districts and students are selected by a lottery conducted by the State Department of Education's Regional School Choice Office. CREC works closely with districts to provide support to students, as well as professional development opportunities for Open Choice schools.

Contact: Debra M. Borrero
dborrero@crec.org 860-524-4033

Curriculum, Instruction and Assessment

Curriculum

Common Core State Standards Mathematics Curriculum Development

An understanding of the Common Core State Standards K-12 is crucial to effective curriculum design. Our trainers provide customized instruction for districts to prioritize the standards and create rigorous curriculum units of instruction.

Contact: Peggy Neal
pneal@crec.org 860-509-3652

Common Core State Standards Language Arts Curriculum Development

A facilitator trained in Rigorous Curriculum Design will lead your team of curriculum designers in the development of units aligned with the Common Core State Standards, using the Connecticut Priority Standards as a guide. A unit template is available to assist your team in crafting a quality curriculum unit.

Contact: Sarah Lahr Fitzsimons
sfitzsimons@crec.org 860-524-4098

Curriculum Unit Revision Infusing Technology

Our trainers will help align your curriculum with state, national and international student achievement and technology standards through the Curriculum Unit Revision Infusing Technology (CURIT) methodology. This process includes articulating objectives, reviewing units in their current form, defining connections between lessons and standards, using a unit plan template to describe and redesign each lesson, facilitating research to infuse technology into the unit and implementing the plan.

Contact: Ratosha Terry
rterry@crec.org 860-524-4007



Online and Blended Course Design

Schools and organizations looking to develop online courses benefit from the expertise of CREC's team of certified online curriculum developers. Whether for professional development and training or for the delivery of K – 12 instruction, online learning through CREC can provide the class design and hosting solution to provide anytime, anywhere access to your learners.

Contact: Doug Casey
dcasey@crec.org 860-524-4092

Science Curriculum Development

Our science education specialists are available to provide in-district support for science curriculum development, lesson design and modeling, as well as one-on-one classroom coaching.

Contact: Sheila Lamenzo
slamenzo@crec.org 860-509-3687

Virtual High School (VHS)

Virtual High School provides middle and high school students with course offerings that may not typically be available in local schools. Cohort-based, semester-long courses enable students to take courses anytime and assist districts with scheduling conflicts. Working collaboratively, using 21st century communications technology, students interact with and learn from classmates from the U.S. and around the globe.

Contact: Gio Koch
gkoch@crec.org 860-509-3686

Virtual Learning Academy

Virtual Learning Academy (VLA) is an online option for schools that are interested in alternative solutions for graduation requirements and credit recovery. VLA offers 80 self-paced courses for students in grades 2 through 12. Annual student licenses allow students to take multiple courses. While VLA is an excellent option for credit recovery, it is also a good alternative for homebound and special education students, as well as students in alternative programs.

Contact: Gio Koch
gkoch@crec.org 860-509-3686

21st Century Skills

We help equip learners for the 21st century by working with teachers, workforce development bureaus and employers through strategic partnerships to offer authentic learning experiences both in and out of school. This expertise stems from years of operating schools in which the use of technology supports the development of communication, creativity, collaboration and other higher-level thinking skills. Current initiatives in this area include the development of open curriculum, the transformation of schools to offer 24/7 learning while cutting operational expenses and the development of assured experiences that demonstrate student mastery of applied skills.

Contact: Doug Casey
dcasey@crec.org 860-524-4092

Instruction

Data-Driven Decision Making and Data Team Facilitation

Data-Driven Decision Making is a systematic process educators use to make decisions to improve student achievement. Data teams (district, school and instructional) provide avenues for data analysis to impact instruction at each level. Our knowledgeable staff provides training in this area and facilitates data teams within your school and district.

Contact: Jessica Martin
jemartin@crec.org 860-524-4076

Differentiated Instruction

Differentiated instruction is based upon the belief that students learn best when they make connections between the curriculum and their diverse interests and experiences, and that the greatest learning occurs when students are pushed slightly beyond the point where they can work without assistance. Teaching and Learning education specialists will support your staff in building capacity for implementation of differentiated instruction in all subject areas. We can also deliver the new CALI module for differentiated instruction.

Contact: Sarah Lahr Fitzsimons
sfitzsimons@crec.org 860-524-4098

Effective Teaching Strategies

Explore the research provided by Robert Marzano and how to apply it to everyday teaching practices. Teachers learn the basis for each strategy and review practical examples in the classroom. Participants also create personal applications for each strategy in their content area(s). This workshop can be adjusted for any content area.

Contact: Dina Crowl
dcrowl@crec.org 860-509-3603

Effective Teaching Strategies for English Language Learners

The essence of effective instruction for English Language Learners (ELLs) is high expectations, quality instruction and differentiation. CREC provides support through workshops on differentiation, effective ELL instructional strategies, data analysis and modeling and coaching in the classroom. We customize professional development workshops and deliver the CALI Basic Module for ELL.

Contact: Marta Diez
mdiez@crec.org 860-509-3613



Instructional Coaching

Participants learn proven coaching models and apply the knowledge to current work. Using workshop resources such as video clips, case studies and research articles, participants work with colleagues and an on-site professional development trainer to design action plans intended to increase student achievement through improved planning and instruction.

Contact: Sarah Lahr Fitzsimons
sfitzsimons@crec.org 860-524-4098

Lesson Studies and Demonstrations

Under the guidance of a trained facilitator, teachers work collaboratively to develop targeted lesson planning and implementation skills. Job-embedded lesson studies or demonstration lessons have three essential components: preconference lesson planning, demonstration lesson and debriefing and next steps. This work is based on the Japanese model of lesson study and is tailored to the needs of your district.

Contact: Sarah Lahr Fitzsimons
sfitzsimons@crec.org 860-524-4098

Looking at Student Work

Our trained facilitators will assist your data team to learn and modify LASW protocols and provide support during the data team process. Looking at Student Work allows a grade level team to identify and implement targeted instructional strategies, ultimately improving teaching and learning.

Contact: Sarah Lahr Fitzsimons
sfitzsimons@crec.org 860-524-4098

Paraprofessional Professional Development

CREC offers a comprehensive, job-embedded professional development curriculum called The COMPASS that is aligned with the National and State Paraprofessional Standards. COMPASS provides learning on a broad array of relevant topics, including Assistive Technology to Support Student Learning, Exceptional Learners, Instructional Strategies, Managing Behaviors, Supporting Secondary Literacy Instruction, Teaching English Language Learners and Teaching Students with Autism. Districts can purchase the training materials and do the training themselves or hire CREC to provide the training directly to their paraprofessionals.

Contact: Janet Scialdone
jscialdone@crec.org 860-509-3681



Readers and Writers Workshop

Staff developers trained at Teacher's College, Columbia University Graduate School of Education will support your district or school plan to implement Readers and Writers Workshop. We can provide an introduction to workshop instruction, grade-level implementation and demonstration lessons. We can also help you make connections to the Common Core State Standards.

Contact: Sarah Lahr Fitzsimons
sfitzsimons@crec.org 860-524-4098

Teaching Financial Literacy

This session provides teachers with resources for teaching personal finance to middle or high school students. All resources are aligned with state and national standards in math, business education, family and consumer science and social studies.

Contact: Anne Raymond
araymond@crec.org 860-524-4018

Assessment

Assessment Data Collection

We can help you collect and organize your assessment data, using various technology resources, so it is easier to analyze and use to make informed instructional decisions.

Contact: Jessica Martin
jemartin@crec.org 860-524-4076

Curriculum and Assessment Consortium

The CREC Curriculum and Assessment Consortium is a regional partnership of districts working to create rigorous, teacher designed curriculum and performance assessments aligned to the Common Core State Standards (CCSS). Consortium participants benefit from access to the CREC common assessments and item bank, collaborative time with fellow professionals, a shared understanding of Common Core State Standards and increased teacher leader capacity within their own districts.

Contact: Jessica Martin
jemartin@crec.org 860-524-4076

K-2 Assessment Consortium

The K-2 Assessment Consortium offers meaningful performance assessment tasks for students in kindergarten through grade 2. The assessment tasks measure student progress on the state standards in mathematics and science with an emphasis on creating developmentally appropriate tasks to help inform instruction.

Contact: Jessica Martin
jemartin@crec.org 860-524-4076

Secondary Education

Connecticut's Career Pathways Initiative

This initiative helps students connect their classroom learning to decisions regarding secondary academic and elective course enrollment, postsecondary plans and careers. It also integrates vigorous academic courses and career-related electives with hands-on learning and comprehensive school counseling.

Contact: Anne Raymond
araymond@crec.org 860-524-4018

Connecticut Student Success Plans (SSP)

These individualized, student-driven plans help students stay engaged and achieve post-secondary educational and career goals. The SSP begins in the sixth grade and continues through high school, providing support for students and assistance in goal setting for social, emotional, physical and academic growth, meeting rigorous high school expectations and exploring post-secondary education and career interests.

Contact: Anne Raymond
araymond@crec.org 860-524-4018

Secondary Special Education Issues

It is important that secondary programs for students with disabilities teach independent management of everyday expectations through specialized strategies and targeted direct instruction. CREC can provide professional development, technical assistance and instructional coaching to maximize resources, redefine roles of staff and dovetail IEP requirements with standards based practices.

Contact: Sonya Kunkel
skunkel@crec.org 860-509-3763

Youth @ Work - Talking Safety

This curriculum on workplace safety and health was developed for high school students by the National Institute for Occupational Safety and Health (OSHA) and its partners. The curriculum is customized for Connecticut schools and uses games and other interactive activities to offer teens the knowledge and skills they need to stay safe at work.

Contact: Mary Lou Molloy
mmolloy@crec.org 860-509-3649



Connecticut Accountability for Learning Initiative (CALI)

CREC has trained facilitators in all of the key areas identified by CALI. CALI was implemented by the Connecticut State Department of Education to accelerate the learning of all students and close the achievement gap. We provide district and school level training as well as technical assistance in Data-Driven Decision Making, Data Teams, Assessments, School Climate and SRBI.

Contact: Dina Crowl
dcrowl@crec.org 860-509-3603

Scientific Research-Based Interventions (SRBI)

SRBI: Overview and Implementation Support

CREC has state certified SRBI trainers, available to conduct in-district and regional professional development in basic and advanced SRBI practices. From introduction of basic SRBI concepts to planning strategies for Tier I, II or III academic and social support, let CREC assist you with an SRBI overview and development of an implementation plan.

Contact: Dina Crowl
dcrowl@crec.org 860-509-3605

SRBI Framework: Developing, Maintaining and Extending Comprehensive Practices

CREC can help you develop and enhance your SRBI framework through an SRBI school or district assessment, technical assistance and professional development on SRBI topics. We can teach your staff the ways in which the SRBI framework and the new LD guidelines work collectively. Our education specialists help your district assess, evaluate, create and monitor your tiered behavioral interventions to dovetail with your current SRBI academic practices.

Contact: Peg MacDonald
mmacdonald@crec.org 860-524-4037

Instructional Technology

Web 2.0 Design and Support

Learn how to leverage the host of free and low-cost, Web-based tools available to your district — collectively known as “Web 2.0” – to support instruction, learning and operations. Our team of educational technology experts offers custom training to your school or district in the design of collaborative wikis, blogs and social networking tools. We will guide you through design and policy considerations to address fair use and help ensure compliance with privacy and professional standards.

Contact: Doug Casey
dcasey@crec.org 860-524-4092



Wiki Space Development and Support

Online sharing has become an integral method for educators to share best practices. Our staff can help you design and create an online professional learning community for your organization, where staff can share lesson plans, management strategies and other resources.

Contact: Jessica Martin
jemartin@crec.org 860-524-4076

Special Education/Student Support Services

Assistive Technology (AT) Services

CREC provides assistance and training to increase knowledge of AT solutions to meet a variety of students’ needs. Assistance includes consultations and evaluations for specific students, classrooms and/or districts. Training can be individualized to meet district needs, with a focus on building staff capacity.

Contact: Nicole Natale
nnatale@crec.org 860-866-6946

Co-Teaching Practices: Basic and Advanced

Workshops, technical assistance and coaching are available to develop and advance your co-teaching practices. CREC provides audits, program development, professional coaching and scheduling assistance to maximize co-teaching resources and increase student achievement.

Contact: Sonya Kunkel
skunkel@crec.org 860-509-3763

Individual Education Plans (IEPs) for Educational Benefit

Raise achievement of students with disabilities by matching specifically designed instruction with well-written IEPs. Professional development modules and technical assistance on present levels of academic achievement and functional performance, standards-based goals and objectives, instructional planning and data collection and progress monitoring can be tailored to specific needs within the district or school.

Contact: Lisa A. Fiano
lfiano@crec.org 860-712-3897



Specialized Instruction/ Child Specific Consultation

Comprehensive evaluation and on-site observation with technical assistance is available to districts to support teachers and administrators in selecting the most appropriate instructional and behavior management strategies for individual students. Through education benefit analysis, CREC's team of education specialists can work with teachers and teams to ensure comprehensive IEP development, implementation and data collection. Specialists provide a full range of services for future planning, transition programming, communication, assistive technology and assessment.

Contacts: Janet Scialdone
jscialdone@crec.org 860-509-3681

English Language Learners with Special Needs

Modules address effective referral and assessment of culturally and linguistically diverse students and early intervention for struggling learners using culturally relevant processes. The modules also increase ELL special education student achievement through professional development technical assistance. Our experienced staff can assist your district to develop and maintain quality best practices.

Contact: Julie Giaccone
jgiaccone@crec.org 860-748-8001

Meeting the Needs of Students with Autism

CREC education specialists can provide training and technical assistance to select the most appropriate instructional or behavior management strategies for students with autism. Support can be provided at the program level or to individual students. Training and technical assistance includes accommodations and modifications, assistive technology, communication, social skills instruction, specialized instruction, transdisciplinary teaming and use of paraprofessionals.

Contact: Cynthia Zingler
czingler@crec.org 860-916-3291

Serving Adults with Disabilities

This workshop series includes the following topics:

- Accommodations for Adult Education Students with Disabilities
- Functional Implications for Students with Hidden and/or Apparent Disabilities
- Transition for Adult Students with Disabilities
- Boundaries: Ethical Work in Adult Education

Contact: Laura DiGalbo
ldigalbo@crec.org 860-509-3726

Special Education Audit and Program Assessment Services

CREC experts in special education audit and program review are available to analyze and assess special education program efficiency and effectiveness. Program reviews provide useful recommendations to address special education challenges, including curriculum and academic rigor, educational benefit, effective processes, organizational structure, professional development and resource allocation.

Contact: Peg MacDonald
mmaacdonald@crec.org 860-524-4037

School Climate

Bullying

CREC provides training and technical assistance to address bullying behaviors with appropriate, effective responses. Using these techniques, administrators, teachers, school staff, parents and students can address bullying in the school. CREC can help schools prevent bullying behavior and respond appropriately when it occurs.

Contact: Donna Morelli
dmorelli@crec.org 860-371-1226

Culturally Responsive Teaching

Students perform their best in a culturally responsive classroom. The three R's of Relevance, Relationships and Rigor are explored through workshops, developing school improvement plans and curriculum audits.

Contact: Tim Nee
tnee@crec.org 860-509-3650

Improving School Climate to Improve Student Achievement

All students need to feel safe and respected at school. CREC staff can help assess your school climate, provide workshops related to national standards and help create and implement effective school climate action plans to improve the learning environment.

Contact: Tim Nee
tnee@crec.org 860-509-3650



Positive Behavioral Intervention and Supports

This proactive, comprehensive and systemic continuum of support is designed to help students of all ages achieve social, behavioral and learning success with an emphasis is on school-wide support systems. Positive Behavioral Intervention and Supports (PBIS) helps improve the overall school climate, decrease reactive management, maximize student academic achievement, integrate academic and behavioral initiatives and address the needs of students with severe emotional and behavioral concerns.

Contact: Cynthia Zingler
czingler@crec.org 860-916-3291

Welcoming Schools Training

CREC consultants train participants in assessing physical environment, school-wide practices, personal interaction and written materials. This helps them provide their schools with objective tools for assessing school climate and making recommendations to bring about positive change. CREC staff provide training, technical assistance and facilitation of meetings to develop and implement a comprehensive district plan to create welcoming schools.

Contact: Betsy LeBoriosis
bleboriosis@crec.org 860-509-3615

District/School Leadership

Data-Driven Decision Making for School Leaders

Data-Driven Decision Making for School Leaders provides participants with effective data techniques for district and school improvement planning. The information, once gathered and interpreted, provides a foundation to make informed decisions about policies, practices and procedures.

Contact: Jessica Martin
jemartin@crec.org 860-524-4076

Mentoring for Administrators

CREC has experienced administrators who can guide and support new administrators. Experienced administrators, dealing with a challenging issue or a specific area of growth, can be mentored and exposed to best practices.

Contact: Peg MacDonald
mmaacdonald@crec.org 860-524-4037

Mini Observations

Obtain assistance implementing the Kim Marshall-developed method of teacher evaluation and supervision. From organizing to coaching within the process, experienced practitioners are available to districts and schools for use of the “Mini Observation” method.

Contact: Tim Nee
tnee@crec.org 860-509-3650

Professional Development for Aspiring and Practicing Instructional Leaders

Aligned with the Connecticut Standards for School Leaders, these job-embedded learning opportunities address six categories: Clear and Focused Mission and High Expectation for Success, Instructional Leadership, Frequent Monitoring of Student Progress, Time on Task, Safe and Orderly Environment and Home/School Relations.

Contact: Peg MacDonald
mmacdonald@crec.org 860-524-4037

School Improvement Planning

School and district improvement plans need to be specific, measurable and easy to implement. An outside facilitator is often helpful to ensure all stakeholders are involved. We offer districts a template, facilitation and assistance with follow up to ensure effective plan implementation.

Contact: Tim Nee
tnee@crec.org 860-509-3650

Teacher Evaluation and Supervision

Teacher evaluation needs to be meaningful to have an impact on instruction. We can help you create evaluation documents that provide your administrators with the tools needed to help their teaching staff glean the most from the supervision process. Outside evaluators also assist with providing the extra set of “expert eyes” when needed.

Contact: Tim Nee
tnee@crec.org 860-509-3650



School/Family/ Community Partnerships

Family Learning

Literacy in the home and parent involvement in school-related activities have a significant impact on the academic success of children. In homes where reading materials are plentiful and children are read to, children are more likely to stay in school and go on to higher education and higher earning careers. This workshop will help you promote a love of reading and learning in your students and their families. Explore strategies that are proven to extend home learning to support children’s achievements.

Contact: Betsy LeBorious
bleborious@crec.org 860-509-3615

School Governance Councils

From drafting of initial bylaws and guidelines through implementation and evaluation, CREC has been operating school governance councils for many years. Our advisors assist schools to ensure the councils are efficient and achieving their goals.

Contact: Tim Nee
tnee@crec.org 860-509-3650

Adult Education and Employee Development

Adult Education Program Review

CREC's Adult Training and Development Network consultants provide an analysis of your adult education program, covering adult basic skills (ABE and High School Completion) and continuing education offerings. The resulting relevant, customized recommendations will ensure that current, innovative, high-quality services are provided to your community or agency clients.

Contact: Andy Tyskiewicz
atyskiewicz@crec.org 860-524-4043

Annual Conference on Serving Adults with Disabilities

Join us on April 26, 2012 at the Marriott Hotel in Farmington, Connecticut for our 20th annual conference. Don't miss this tremendous opportunity to meet with a wide representation of experts and professionals to discuss strategies and exchange knowledge on the broad spectrum of disabilities.

Contact: Carol Boin
cboin@crec.org 860-524-4048

English Language Learner (Basic and Intermediate)

We provide individual development of written and verbal skills to achieve maximum communication ability in the study of the English language – reading, writing, listening and speaking.

Contact: Flor M. De Hoyos
fdehoyos@crec.org 860-509-3644

English Language Learner (Advanced)

This is our most advanced level of English for speakers of other languages. We take a customized approach and build on students' current knowledge to improve reading, writing, listening and oral communication skills. Class discussions are based on assigned reading topics.

Contact: Flor M. De Hoyos
fdehoyos@crec.org 860-509-3644



General Education Development

We provide individual development of general education skills: language arts, mathematics, social studies and science. Successful completion of this program prepares students to take the General Education Development (GED) test.

Contact: Flor M. De Hoyos
fdehoyos@crec.org 860-509-3644

Human Service Training

This 15-week vocational course prepares adult learners for careers working with teens, people with disabilities or the elderly. The training consists of classroom and internship experiences, and includes certifications in CPR and first aid through the American Red Cross, OSHA, Physical Management Training (PMT) and the Department of Developmental Services Medical Administration.

Contact: Donna Heim
dheim@crec.org 860-509-3643

Workforce Development Services

Customized skill enhancement instruction is developed and delivered for your employees to provide quality programs that address the needs of your business. CREC's workforce development services feature a wide array of fundamental skills training, along with workshops in topics such as conflict resolution, organizing for success and email etiquette.

Contact: Carol Boin
cboin@crec.org 860.524.4048

Communities of Practice

Regional Councils

Curriculum Council

Assistant superintendents and curriculum directors from CREC districts meet monthly to address curriculum and instructional issues related to Teaching and Learning, receive updates from the Connecticut State Department of Education and discuss various issues of concern.

Contact: Dina Crowl
dcrowl@crec.org 860-509-3603

Early Childhood Council

Early childhood educators from CREC districts meet quarterly to share the latest information about federal, state and local early childhood initiatives. CREC staff is available to assist districts or communities in the creation of their own local early childhood councils as well.

Contact: Barbara Perrone
bperrone@crec.org 860-509-3665

Language Arts Council

CREC region language arts educators meet monthly to share best practices and engage in new thinking about instruction. Pre-K to grade 12 language arts educators are encouraged to attend the monthly meetings. Topics and speaker lists are developed by the group.

Contact: Sarah Lahr Fitzsimons
sfitzsimons@crec.org 860-524-4098

Math Council

Math educators teaching grades K to 12 in CREC districts meet five times annually to discuss topics of interest. Math educators are encouraged to attend these meetings. Topic lists are developed by the group.

Contact: Peggy Neal
pneal@crec.org 860-509-3652

Science Council

Science educators in CREC districts meet throughout the year to receive professional development, state updates and share resources related to science curriculum and instruction.

Contact: Jessica Martin
jemartin@crec.org 860-524-4076



Technology Council

Representatives from the IT departments of CREC districts meet monthly to share best practices and benefit from outstanding subject-matter experts who speak on current technology concerns.

Contact: Doug Casey
dcasey@crec.org 860-524-4092

Leadership Networks

Scientific Research-Based Interventions – Strand A

The SRBI Leadership Network, facilitated by SRBI district leaders, provides opportunities for district and K-12 school leaders to share ideas, resources and innovative suggestions on how to address the challenges inherent in building a high quality SRBI framework.

Contact: Sonya Kunkel
skunkel@crec.org 860-509-3763

Special Education Student Achievement – Strand B

Consortium participants discuss ways to provide specially designed instruction in literacy and numeracy, how to improve services to ELL students with disabilities and the implementation of IEPs that improve instruction and maximize resources. Districts send as many as three representatives to these meetings, four times a year. Building and central office administrators, inclusion and intervention specialists and other teaching staff are encouraged to attend.

Contact: Sonya Kunkel
skunkel@crec.org 860-509-3763

Other Networks and Consortia

Assistive Technology (AT) Consortium

CREC's Assistive Technology Consortium provides members with evaluation, consultation and implementation services, training regarding specific AT devices and software and assistance with district AT capacity building. Membership includes a specified number of days of customized services and participation in consortium training sessions (three full-day and three half-day trainings to which each member district can send as many as three people), access to an assistive technology lending library with laptops, iPads/iTouches loaded with various apps and quarterly AT newsletters.

Contacts: Nicole Natale
nnatale@crec.org 860-866-6946
Carolann Cormier
ccormier@crec.org 860-301-3030

Positive Behavioral Interventions and Supports (PBIS) Implementers' Network

PBIS team members who are implementing PBIS in their schools participate in facilitated discussions, share ideas about best practices and PBIS implementation. The meetings are designed to provide professional development (CEUs), current PBIS information and networking opportunities.

Contact: Cynthia Zingler
czingler@crec.org 860-916-3291

Regional Adult Literacy Partnerships

This regional consortium, comprises LEAs, non-profit, state and municipal agencies, meets quarterly and focuses on the regional coordination of adult literacy-related services.

Contact: Andy Tyskiewicz
atyksiewicz@crec.org 860-524-4043



Infrastructure/Organizational Support Services

Business/Accounting Services

Business and Operations Services to Districts

CREC helps districts share “non-educational” services in order to reduce costs and maintain quality. Cooperative purchasing, transportation, energy savings, tech services, facility and food management are examples of our available capacity to help districts, through one central point of contact.

Contact: Cara Hart
chart@crec.org 860-524-4021

Comparative Analysis of Expenditures

CREC offers a comparative analysis of expenditures based on other school districts in the capitol region and CREC schools. This review includes expenditure variances which can be used to discuss school district cost issues.

Contact: Jeff Ivory
jivory@crec.org 860-524-4068

Financial Operating System and Reporting Process Reviews

CREC offers a review of the MUNIS financial system and advice on best practices for its efficient use. Our business personnel are able to provide information and other options for optimal utilization of MUNIS in the accounting department.

Contact: Jeff Ivory
jivory@crec.org 860-524-4068

Internal Controls Assessment

CREC provides districts with internal controls assessments through a review of current business practices, with a special emphasis on reviewing segregation of duties and duplication of tasks within the accounting department.

Contact: Jeff Ivory
jivory@crec.org 860-524-4068

Human Resources/Career Development

CREC Career Academy

The CREC Career Academy provides a variety of standards-based, job-embedded opportunities for educational personnel to learn on the job while advancing their career as paraprofessionals, speech and language assistants, teachers or administrators. Learning opportunities are designed for adult learners who are working in the education field.

Contact: Peg MacDonald
mmacdonald@crec.org 860-524-4037

Advanced Alternate Route to Certification for Special Education Cross Endorsement (AARC)

This 14-month program (approved by the Department of Higher Education, the State Department of Education and NCATE) is designed for working, certified teachers who seek a cross endorsement in special education. The program allows candidates to apply for a Comprehensive Special Education Certification (#165) K-12 endorsement. A new cohort begins annually at the end of June. Classes are held over the summer, weekends and evenings.

Contact: Sonya Kunkel
skunkel@crec.org 860-509-3763

Leadership Development for Non-Certified Staff

A variety of high quality professional development sessions are available to help strengthen leadership skills within your district. Topics include:

- Communication skills
- Conflict resolution
- Effective presentation skills
- Supervising and coaching staff
- Effectively managing change.

Contact: Tricia Silva
tsilva@crec.org 860-524-4085



Technology Professional Training and Certification

The CREC IT Academy provides training and certification across a wide range of technology disciplines. As a Microsoft Partner, we can bolster your technology staff's skills through courses that lead to highly valued professional certifications, such as A+, MCSE and Microsoft Office Specialist. We offer in-person and online learning in hundreds of subjects. We also develop career-readiness programs that help ensure your students leave with job readiness skills and credentials they need for future success.

Contact: Doug Casey
dcasey@crec.org 860-524-4092

Human Resources Services

Analysis of Recruitment and Selection Process

CREC Human Resources staff can review the current processes conducted by your district and provide recommendations to gain focus on the key elements to any hire. We have the expertise to assist districts in the areas of developing necessary documents, creating recruitment plans, defining advertising resources, screening, interviewing and selecting candidates and hiring qualified staff.

Contact: Regina Terrell
rterrell@crec.org 860-509-3605

Interim Staffing and Evaluation Services

CREC'S brokering services specialists can provide districts with highly-qualified professionals for short and long term assignments, or to conduct comprehensive student evaluations. Save time and money by letting CREC manage the recruitment, credentialing, placement and scheduling of your interim staff. We provide payroll and timekeeping services, liability insurance, staff supervision, administration and performance evaluations. We specialize in hard-to-find, shortage-area personnel, including speech language pathologists and special education teachers.

Contact: Gio Koch
gkoch@crec.org 860-509-3686

Paraprofessional Educator Certificate Program

This online five-course program of study, provided in conjunction with Charter Oak College, is designed for paraprofessionals who are interested in college credit. Learning outcomes are based on the National Paraprofessional Standards, and include information on behavior techniques, communication, legal issues, instructional strategies and roles and responsibilities. Upon completion of the five three credit courses, participants will receive a certification from Charter Oak and credits can be applied to other programs, including associate or bachelor degrees.

Contact: Janet Scialdone
jscialdone@crec.org 860-509-3681

Speech-Language Pathology Assistant (SLPA) Certificate

CREC and Charter Oak State College provide an online program of study for aspiring or practicing speech and language pathology assistants. Students will master the skills required to address the language, communication, social/emotional and creative needs of school children. Upon completion of seven three-credit courses, participants will receive a certificate from Charter Oak and can apply the credits toward other programs, including associate or bachelor degrees.

Contact: Julie Giaccone, M.S. CCC-SLP
jgiaccone@crec.org 860-748-8001

Minority Teacher Recruitment

CREC is a member of the RESC Minority Teacher Recruiting Alliance. The Alliance assists districts with the hiring and retention of a diverse work force. CREC can provide assistance to districts interested in creating a Pathways to Teaching program in their high schools.

Contact: Tim Nee
tnee@crec.org 860-509-3650

Review of Diversity and Equal Opportunity

CREC Human Resources can assist districts to provide effective leadership through the review of recruitment policies and procedures, legal compliance in advertising, promotion and transfer procedures of internal candidates and applicant screening efforts. The overview of employment practices will enhance the commitment to multiplicity for all staff and prospective employees and emphasize the importance of maintaining diversity and equal employment opportunities as an integral part of the district.

Contact: Regina Terrell
rterrell@crec.org 860-509-3605

Instructional and Information Technology Services

Classroom Video Production

Work with a trained cinematographer and staff developer to capture classroom instruction that can be used as a learning tool for your entire staff. Document and archive research based instructional practices in your own schools and district. Let us help you utilize web-based classroom footage of instruction and implement best practices.

Contact: Sarah Lahr Fitzsimons
sfitzsimons@crec.org 860- 524-4098



Data Management

CREC Technology Services helps districts overcome their struggles to comply with state requirements for data collection, analysis and reporting. CREC offers services to help LEAs collect, manage and make the best use of their data. We deploy, train, host and provide support for systems, including PowerSchool, Munis, ProTraxx, Performance Tracker, and Naviance.

Contact: Doug Casey
dcasey@crec.org 860-524-4092

Desktop Computer and Server Support

Maximize your investment in technology by leveraging CREC's team of desktop and server experts. The Technology Services team currently manages more than 6,000 computers in more than 40 locations. Benefit from access to a team of local professionals with expertise in educational technology. Contract options include hourly, monthly or full-time engagements.

Contact: David Wu
dwu@crec.org 860-509-3688

Infrastructure Planning and Support

CREC's rapid development and expansion of school technology infrastructure in recent years has enabled us to develop and offer a host of cost-effective school buildout and consulting services. Obtain assistance with school design, budget and expansion implementation that includes network, hardware, server, security and software components.

Contact: David Wu
dwu@crec.org 860-509-3688

Software and Application Hosting

CREC provides low-cost hosting to districts on a range of software applications, including Moodle, PowerSchool, and SharePoint. Our redundant data center offers 24/7 access through a direct feed to the Connecticut Education Network, and our team of software specialists can design a hosting solution that takes the worry out of software delivery.

Contact: Doug Casey
dcasey@crec.org 860-524-4092

Tablet and Mobile Computing

The CREC technology team can lead your school or district in the safe adoption of processes and procedures to weave mobile computing into the curriculum, supporting the development of 21st-century skills. Apple has chosen CREC as its regional partner to support the rollout of iPads and iPods in the classroom. We provide in-district training and curriculum infusion to maximize the tremendous instructional promise of these devices.

Contact: Doug Casey
dcasey@crec.org 860-524-4092

Technology Audit

The CREC audit process identifies ways in which schools can minimize the total cost of ownership associated with purchasing and maintaining computer networks and hardware. CREC technicians provide best-practice insights into improving the use of technology to support curriculum standards. The audit's data and analysis gauges readiness for online assessments, helps drive decisions made by school boards and district leaders and helps schools secure technology grant funding.

Contact: Doug Casey
dcasey@crec.org 860-524-4092

Technology Budgeting and Fulfillment

We will work with your curriculum and operations teams to plan for technology purchases, introduce lease options and offer cost-saving opportunities through cooperative purchasing agreements. Enlist our expertise while planning, budgeting and ensuring delivery of your technology investments.

Contact: David Wu
dwu@crec.org 860-509-3688



Technology Policy and Practice Development

Harnessing new technologies while maintaining a safe, positive school climate, both on and off campus, can be a challenge. We can provide an audit of current policies, from acceptable use policies to cyberbullying, with recommendations for improvement and compliance. Because we operate schools ourselves, we can also help you translate policy into practice and procedure within the classroom.

Contact: Doug Casey
dcasey@crec.org 860-524-4092

Operations

Building Operations Services

Outsourcing Custodial and Maintenance Staff

The CREC Facilities Management Division has expertise in managing contracted custodial and maintenance personnel to support your facility management values, including cleaning methodologies, energy efficiencies and cost-saving goals. The contracted employees successfully assimilate into their assigned facilities and embrace our charge of providing clean, safe and healthy buildings. Our Director of Facilities is available to discuss your needs and manage a successful transition to contracted facility management services.

Contact: Douglas Henley, II
dhenley@crec.org 860-509-3659

Food Services

Planning and Consultation Services

CREC's broad understanding of the National School Meal Program regulatory requirements and the educational environment in Connecticut enable our staff to assist and guide you. We have extensive experience planning, coordinating and managing efficiently run food service operations in many sites in the Hartford region. Our professional staff helps districts use regulatory compliance review, accountability systems and operations consulting services.

Contact: Jeff Sidewater
jsidewater@crec.org 860-509-3774

School Construction, Program Management and Owner's Representation

Facilities and Feasibility Studies

The CREC Construction Division provides a variety of facility and feasibility study services designed to promote efficiency and cost savings. Our facility assessment studies analyze energy consumption, space efficiency use, life cycle costs, long range plans, facility conditions and related areas. We also generate feasibility studies to help our clients make informed decisions that address both their immediate need and well-formulated long range plans.

Contact: John A. Mena
jmena@crec.org 860-509-3732

Facility/Operations Services

We provide a multitude of services to clients and districts – from facility operations services involving feasibility studies, facility assessment and energy cost savings solutions to retro-commissioning – designed to help identify needs, promote efficiencies and develop logical, effective short and long-term solutions. In addition to construction and closeout phase management, we provide furniture, fixtures and equipment (FF&E) procurement and coordination, move management services and oversight of commissioning services.

Contact: John A. Mena
jmena@crec.org 860-509-3732

Project/Program Management Services

We provide a-la-carte project/program management services, including pre-construction options in which we create procedures, conduct professional service selections, and maximize funding opportunities while managing contracts and overall design. We offer construction oversight by implementing tools and controls to maintain a clear vision of progress and forecasting. We also meticulously manage closeout since the most complex part of a project can be the last five percent of residual work.

Contact: John A. Mena
jmena@crec.org 860-509-3732

Transportation Management and Consultation

Contractor Management

CREC's transportation specialists provide oversight of your district's transportation system by managing the contractor, providing customer service and support, ensuring bus companies are meeting contractual requirements, preparing RFPs and contracts and providing required reporting.

Contact: Mason Thrall
mthrall@crec.org 860-524-4056



Customer Service and Support

CREC provides customer service and support to districts, handles calls and works with district transportation coordinators and contractors to resolve issues.

Contact: Mason Thrall
mthrall@crec.org 860-524-4056

Regionalization Planning

CREC's Transportation works with neighboring districts to design and implement regional transportation systems. We can also provide management for the system or support the local management team.

Contact: Mason Thrall
mthrall@crec.org 860-524-4056

Reporting and Analysis

CREC can analyze contracts and prepare reports on transportation costs, ride time, vehicle usage, customer satisfaction and more.

Contact: Mason Thrall
mthrall@crec.org 860-524-4056

Safety Programs and Training

CREC provides school bus safety training for drivers and/or students. We also offer training for transportation coordinators, dispatchers and other transportation staff.

Contact: Mason Thrall
mthrall@crec.org 860-524-4056

Staff Brokering

CREC provides transportation staff on a temporary or permanent basis and brokers transportation for districts.

Contact: Mason Thrall
mthrall@crec.org 860-524-4056

Other Services

After School Program Quality Advising

Utilizing the research-based assessment of the After School Program Practices tool, CREC quality advisors provide objective feedback on the design and implementation of before and after school programming. Our quality advisors have worked with programs across Connecticut and Western Massachusetts, obtaining best practices to ensure the finest quality before- and after-school programs. Quality advisors facilitate team meetings, review feedback from observations and work with staff to develop plans for program improvement.

Contact: Betsy LeBoriorous
bleboriorous@crec.org 860-509-3615

Audit and Program Assessment

CRECs audit and program assessment services help you save money and increase efficiency. Key assessment areas are: adult education, business and financial services, curriculum instruction and assessment, early childhood, English Language Learners, grants and development, health services, human resources, operations, school improvement, transportation, special education and technology.

Contact: Peg MacDonald
mmaacdonald@crec.org 860-524-4037

Conference and Events Management

CREC provides consultation to districts, municipalities, state agencies and other organizations to manage on-site professional development seminars, statewide conferences and other events. Our event planners assist with event publicity, participant registration, scheduling and logistics, contracting speakers, obtaining CEU credits, preparing exhibits, menus, catering and all aspects of venue logistics.

Contact: Tricia Silva
tsilva@crec.org 860-524-4085

Facilitators for Strategic Planning

CREC's nationally certified facilitators are available to assist your school, district or organization to effectively and efficiently conduct strategic planning sessions.

Contact: Tricia Silva
tsilva@crec.org 860-524-4085

Health and Wellness

CREC provides webinars and peer education programs for districts on topics that affect students' well being, including Internet safety (cyber-bullying), youth gambling prevention, teen dating violence, tobacco cessation and conflict resolution, among others.

Contact: Rosemary Nichols
ronichols@crec.org 860-524-4040

Meeting Facilitation

CREC's nationally certified facilitators are available to assist your school, district or organization to conduct effective and efficient meetings, such.

Contact: Tricia Silva
tsilva@crec.org 860-524-4085

New Business Development

CREC develops new programs and services for a wide variety of private, public and educational organizations, planning and implementing cost-effective initiatives. We help districts improve services to their communities, assisting them with the collaborative partnerships that make projects successful and cost-effective.

Contact: Peg MacDonald
mmaacdonald@crec.org 860-524-4037

Survey Development and Analysis

CREC staff will work with you to develop surveys (in both electronic and hard copy formats), analyze and interpret the resulting data, thus saving time and resources.

Contact: Tim Nee
tnee@crec.org 860-509-3650

Grants and Development Services

Foundation Development

CREC's Grants and Development Office provides assistance organizing and implementing foundation initiatives. We can help identify funding priorities, recruit and select foundation board members, consult on foundation administrative and legal responsibilities and assist with marketing and development ideas.

Contact: Christina Peterman
cpeterman@crec.org 860-509-3657

Fund-raising – Annual Appeals

An annual appeal fund-raising program is a broad, recurring, organized effort conducted to seek funds for pressing need. CREC's Grants and Development Office assists clients in instituting annual appeal programs to build a broad system of regular, private support.

Contact: Christina Peterman
cpeterman@crec.org 860-509-3657



Grant Writing and Research

CREC's Grants and Development Office offers an array of grant writing and research services to school districts and non-profits. Services include the evaluation of federal, state and private funded grants, fund-raising assessment, grant administration, grant research, grant writing workshops, state, federal, private and corporate foundation grants and strategic planning for funding priorities.

Contact: Kathy Randall
krandall@crec.org 860-509-3655

Regional Resource Collaborative

The newly created Regional Resource Collaborative was formed to harness the power of regional collaboration in order to reach common goals. As a member of the collaborative, your district gains access to an array of fund-raising resources and services to support your district initiatives and the opportunity to work with other organizations in the region, collectively impacting issues and solving problems in the community.

Contact: Kathy Randall
krandall@crec.org 860-509-3655

CREC Products



The COMPASS: Helping Paraprofessionals Navigate the Profession

The COMPASS, a comprehensive, job-embedded professional development curriculum developed specifically for paraprofessionals, is aligned with National Paraprofessionals Standards. The full curriculum, consisting of more than eighteen basic and advanced modules that address an array of topics related to behavior, autism, instructional strategies and SRBI, is available for purchase. Training and technical assistance for implementation is available.

Contact: Janet Scialdone
jscialdone@crec.org 860-509-3681

Designing IEPs for Educational Benefit: A Training Program

The Individualized Education Plan (IEP) is the foundation of sound instructional practices for students with disabilities. This training series provides information and best practices on writing present level of performance, standards-based goals objectives and considerations for data collection, with a focus on creating educational benefit for students with disabilities. Districts can purchase the training curriculum or CREC can provide training to their staff.

Contact: Jeanne Szewczak
jszewczak@crec.org 860-524-4022

Guide for Effective Use and Supervision of Speech and Language Pathology Assistants (SLPA)

This guide provides speech and language pathologists (SLPs) with resources and tools to organize case loads, schedules and facilitate communication between the supervising SLP and the SLPA in order to provide effective intervention. Information and tools in this guide are based upon the American Speech and Hearing Association Guidelines for the use and supervision of SLPAs.

Contact: Jeanne Szewczak
jszewczak@crec.org 860-524-4022

Response to Intervention: A Planning and Implementation Guide for School Practitioners

Response to Intervention (RTI) is a prevention model designed to improve academic achievement and school behavior for all students. This guide focuses on the academic side of the model, with an emphasis on at-risk, struggling learners. The needs of linguistically diverse and high achieving students are also addressed. Written from the perspective of a secondary level practitioner and administrator, this guide provides real world examples and practical solutions for school and district staff.

Contact: Jeanne Szewczak
jszewczak@crec.org 860-524-4022

The Use of Visuals with Individuals with Special Needs

This professional development curriculum is designed for all teachers working with students with autism, intellectual disabilities and other special needs. It includes seven hours of training, materials, a PowerPoint presentation, extensive resources about the use of visuals and information on low, mid and high-technology strategies.

Contact: Jeanne Szewczak
jszewczak@crec.org 860-524-4022

CREC Senior Leadership

*CREC Cabinet Members



Bruce E. Douglas, Ph.D.*
Executive Director
860-524-4063 bdouglas@crec.org



Denise M. Gallucci*
Deputy Executive Director
Superintendent of Schools
860-524-4015 dgallucci@crec.org



Donald P. Walsh*
Deputy Executive Director
Finance and Operations
860-509-3623 dwalsh@crec.org



Sarah J. Barzee, Ph.D.*
Assistant Executive Director
860-524-4064 sbarzee@crec.org



Sandy Cruz-Serrano*
Director of Operations
860-509-3719 scruzserrano@crec.org



Regina B. Terrell*
Director of Human Resources
860-509-3605 rterrell@crec.org



Deborah Richards*
Director of Student Services
860-524-4025 derichards@crec.org



Margaret MacDonald, Ph.D.
Director of Technical Assistance and
Brokering Services (TABS)
860-524-4037 mmacdonald@crec.org



Dina Crowl
Assistant Superintendent of Schools
Director of Teaching and Learning
860-509-3603 dcrowl@crec.org



John Mena
Director of School Construction
860-509-3732 jmena@crec.org



Andrew Tyskiewicz
Director of Community Education
860-524-4043 atyskiewicz@crec.org



Douglas Casey
Director of Information Technology
860-524-4092 dcasey@crec.org



Aura Alvarado
Director of Communications
and Community Relations
860-524-4065 aalvarado@crec.org

Contact Information

Community Education

Division Director

Andy Tyskiewicz
860-524-4043
atyskiewicz@crec.org

Assistant to the Director

Elizabeth Kaflik
860-524-4046
ekaflik@crec.org

Education Specialists

Carol Boin
860-524-4048
cboin@crec.org

Flor M. De Hoyos
860-509-3644
fdehoyos@crec.org

Laura DiGalbo
860-509-3726
ldigalbo@crec.org

Donna Heim
860-509-3643
dheim@crec.org

Mary Lou Molloy
860-509-3649
mmolloy@crec.org

Program Managers

Betsy LeBorious
860-509-3615
bleborious@crec.org

Maryanne Pascone
860-509-3645
mpascone@crec.org

Anne Raymond
860-524-4018
araymond@crec.org

Operations

Division Director

Sandy Cruz-Serrano
860-509-3719
scruzserrano@crec.org

Assistant to the Director

TBD
860-509-3718

Accounting

Jeff Ivory, Comptroller
860-524-4068
jivory@crec.org

Business and Operations Services

Cara Hart
Coordinator to Districts
860-524-4021
chart@crec.org

Facilities

Douglas Henley, II
Director
860-509-3659
dhenley@crec.org

Food Services

Jeff Sidewater
Program Coordinator
860-509-3774
jsidewater@crec.org

School Construction

John A. Mena, Director
860-509-3732
jmena@crec.org

Transportation

Mason Thrall, Director
860-524-4056
mthrall@crec.org

Open Choice/Regional School Choice Office

Director of School Choice Programs

Debra Borrero
860-524-4033
dborrero@crec.org

Student Support Services Coordinator

Renita Satchell
860-524-4017
rsatchell@crec.org

Student Support Center and Summer Program Manager

Riberia Jones
860-509-3768
rjones@crec.org

Early Beginnings (Kindergarten Only)

Early Childhood Coordinator

Barbara Perrone
860-524-3665
bperrone@crec.org

Early Beginnings Resource Specialist

Amanda Potyra
860-509-3789
apotyra@crec.org

Lead Support Specialist

Janette Hernandez
860-509-3769
jhernandez@crec.org

Support Specialists

Sylena Ellison
860-651-3341 ext. 455
sellison@simsbury.k12.ct.us

Samuel Girona
860-509-3776
sgirona@crec.org

Michael Livingston
860-509-3642
mlivingston@crec.org

Rudolph (Rudy) Thomas
860-524-4075
ruthomas@crec.org

Contact Information

Teaching and Learning

Division Director

Dina Crowl
860-509-3603
dcrowl@crec.org

Assistant Division Director

Tim Nee
860-509-3650
tnee@crec.org

Assistant to the Director

Sheila Lamenzo
860-509-3687
slamenzo@crec.org

Early Childhood Coordinator

Barbara Perrone
860-509-3665
bperrone@crec.org

Education Specialists

Deborah Brennan
860-509-3661
dbrennan@crec.org

Linda Darcy
860-509-3783
ldarcy@crec.org

Marta Diez
860-509-3613
mdiez@crec.org

Sarah Lahr Fitzsimons
860-524-4098
sfitzsimons@crec.org

Peggy Neal
860-509-3652
pneal@crec.org

Program Manager

Jessica Martin
860-524-4076
jemartin@crec.org

Technical Assistance and Brokering Services (TABS)

Division Director

Margaret MacDonald
860-524-4037
mmacdonald@crec.org

Assistant to the Director

Julie Holcomb
860-509-3619
jholcomb@crec.org

Education Specialists

Elizabeth Battaglia
203-668-2074
ebattaglia@crec.org

Carolann Cormier,
860-301-3030
ccormier@crec.org

Lisa Fiano
860-712-3897
lfiano@crec.org

Julie Giaccone
860-748-8001
jgiaccone@crec.org

Sonya Kunkel
860-509-3763
skunkel@crec.org

Donna Morelli
860-371-1226
dmorelli@crec.org

Nicole Natale
860-866-6946
nnatale@crec.org

Michelle Sullivan
781-454-5146
misullivan@crec.org

MaryJo Terranova
860-945-0116
mterranova@crec.org

Cynthia Zingler
860-916-3291
czingler@crec.org

Program Managers

Gio Koch
860-509-3686
gkoch@crec.org

Rosemary Nichols
860-524-4040
ronichols@crec.org

Doug Ruscio
860-524-4045
druscio@crec.org

Janet Scialdone
860-509-3681
jscialdone@crec.org

Tricia Silva
860-524-4085
tsilva@crec.org

Grants and Development

Christina Peterman
860-509-3657
cpeterman@crec.org

Kathy Randall
860-509-3655
krandall@crec.org

Contact Information

Technology Services

Division Director

Doug Casey
860-524-4092
dcasey@crec.org

Managing Director

David Wu
860-509-3688
dwu@crec.org

Assistant to the Director

Maureen Bhoj
860-524-4053
mbhoj@crec.org

Education Technology Specialists

Ratosha Terry
860-524-4007
rterry@crec.org

Emily Rosen
860-509-3610
erosen@crec.org

Joe Fromme
860-509-3617
jfromme@crec.org

CREC Schools

Deputy Executive Director

Superintendent of CREC Schools

Denise M. Gallucci
860-524-4015
dgallucci@crec.org

Assistant Superintendents

Dina Crowl
860-509-3603
dcrowl@crec.org

Anne McKernan
860-509-3709
amckernan@crec.org

Assistant to the Director

Jessica Saunders
860-509-3785
jsaunders@crec.org

Research, Evaluation and Data Analysis

Sarah Ellsworth
Director of Data,
Evaluation and Research
860-509-3792
sellsworth@crec.org

Julia Case
Coordinator of Research
and Development
860-509-3666
jucase@crec.org

Heather Levitt Doucette
Coordinator of Data,
Evaluation and Research
860-509-3794
hldoucette@crec.org

Student Services

The Division of Student Services offers professional development and technical assistance and programming for students with autism, developmental disabilities, students who are deaf or hearing impaired and students with behavioral/emotional disabilities.

Division Director

Deborah Richards

860-524-4025

derichards@crec.org

Assistant Director

Carole Kerkin

860-509-3695

ckerkin@crec.org

Assistant to the Director

Jennifer Feigenbaum

860-524-4052

jfeigenbaum@crec.org

River Street School

Services for students on the Autism Spectrum and for students with developmental disabilities

Tom Parvenski, Program Director

860-298-9079

tparvenski@crec.org

- Psychopharmacology and Autism
- Functional Behavior Analysis in the School Setting
- Social Thinking Curriculum
- Child/Adolescent Development and Developmental Disabilities

John A. Allison, Jr. Polaris Center

Services for students with behavioral or emotional disabilities

Tim Carroll, Program Director

860-289-8131, extention 3408

tcarroll@crec.org

- Classroom Interventions for Working with Students with Behavioral/Emotional Disabilities
- Psychopharmacology with Children and Adolescents
- Attention Deficit Hyperactivity Disorder: Understanding and Interventions

Soundbridge

Services for students who are deaf or hard of hearing

Elizabeth Cole, Program Director

860-529-4260

ecole@crec.org

- Program Development and Consultation
- Consultation on Sound Field Equipment
- "Normal Noise" and its Impact on Access to the Curriculum for Students who are Deaf or Hard of Hearing
- Essential Audiological Support for Students with Hearing Loss in the General Education Classroom
- Addressing the Language and Academic Needs of Students with Hearing Loss in the General Education Classroom
- Audiology 101 Update for Speech Language Pathologists, Teachers or Administrators
- Planning and Implementing Post-secondary Transition for Students with Hearing Loss

Health Services

Services for the health and physical well-being of students and staff

Andrea Dillon, Assistant Director of Health Services,

860-298-0602, extension 5022

- CPR
- First Aid Training,
- Physical/Psychological Management Training (PMT),
- Smoking Cessation and Prevention,
- Weight Management for Students,
- Supervision of Clinical Nursing Staff,
- Consultative Services

CREC Schools

Pre-K and Elementary Schools

Discovery Academy (Pre-K to Grade 5)

417 Franklin Ave., Hartford, CT 06106

860-296-2090

Dr. Lynn C. Toper, Principal

International Magnet School

for Global Citizenship (Pre-K to Grade 5)

21 Church Street, East Hartford, CT 06118

860-282-0537 (K-5)

656 Silver Lane, East Hartford, CT 06118

860-895-9114 (Pre K)

Cindy Rigling, Principal

Montessori Magnet School (Pre-K to Grade 6)

1460 Broad Street, Hartford, CT 06106

860-757-6100

Melissa Gagne, Principal

Reggio Magnet School of the Arts (Pre-K to Grade 5)

125 Fisher Drive, Weatogue, CT 06089

860-674-8549

Josie Di Pietro Smith, Principal

East Hartford-Glastonbury Elementary Magnet School (Pre-K to Grade 5)

305 May Road, East Hartford, CT 06118

860-622-5400

Glen Peterson, Principal

Medical Professions and Teacher Preparation Academy (Pre-K 3 and 4)

10 Univac Lane at 10 Targeting Center

Bloomfield Avenue, Windsor, CT 06095

860-298-0602

Andrew Skarzynski, Principal

Museum Academy (Pre-K to Grade 5)

1283 Asylum Avenue, Hartford, CT 06105

860-231-7800

Shandra Brown, Principal

University of Hartford Magnet School (Pre-K to Grade 5)

196 Bloomfield Avenue, West Hartford, CT 06117

860-236-2899

Elaina Brachman, Principal

Middle and High Schools

Academy of Aerospace and Engineering (Grades 6 to12)

15 Vernon Street, Hartford, CT 06106

860-757-6300

Delores Bolton, Principal

Greater Hartford Academy of Mathematics and Science: Half-Day Program (Grades 9 to12)

15 Vernon Street, Hartford, CT 06106

860-757-6300

Delores Bolton, Principal

Medical Professions and Teacher Preparation Academy (Grades 6 to10)

10 Univac Lane at 10 Targeting Center

Bloomfield Avenue, Windsor, CT 06095

860-298-0602

Andrew Skarzynski, Principal

Greater Hartford Academy of the Arts (Grades 9-12)

15 Vernon Street, Hartford, CT 06106

860-757-6300

Dr. Herbert Sheppard, Principal

Great Path Academy (Grades 10 to 12)

60 Bidwell Street, Manchester, CT 06045

860-512-3700

Dr. Leslie Torres-Rodriguez, Principal

Metropolitan Learning Center (Grades 6 to12)

1551 Blue Hills Avenue, Bloomfield, CT 06002

860-242-7834

Sasha Douglas, Principal

Public Safety Academy (Grades 6 to 12)

107 Post Office Road, Enfield, Connecticut 06082

860-253-0274

Ryan Donlon, Principal

Two Rivers Magnet Middle School (Grades 6 to 8)

337 East River Drive, East Hartford, CT 06108

860-290-5320

Jean Privitera, Principal



CREC
Capitol Region Education Council

111 Charter Oak Avenue
Hartford, CT 06106
www.crec.org

The publication of this statement notifies applicants, students, employees and parents that it does not discriminate on the basis of race, color, national origin, sex, or disability. Schools and educational agencies that receive federal funds must list the Coordinators of Section 504 and Title IX with their name/title, address and phone number in the notice of nondiscrimination. This indicates compliance under Title IX and Section 504.

Citations: Title IX: 34 CFR § 106.9 and Section 504: 34 CFR § 104.8